



PROJECT REPORT

MAY TO JUNE 2021

ALLEGRIA APARTMENTS



INVESTAUREUM

A MEMBER OF AUREUM GROUP

INDEX

2. INITIAL CONSIDERATIONS - INTRODUCTION
3. INITIAL CONSIDERATIONS - PROJECT ORGANIZATION
4. PROJECT MANAGEMENT
5. WORK PROGRESSION
 - CONCLUSIONS
 - PROGRESS OF WORKS
 - QUALITY CONTROL
 - INSPECTIONS AND TESTS
 - SAFETY SURVEYS AND IMPLEMENTATION OF THE HEALTH AND SAFETY PLAN (HSP)
 - INCIDENTS
 - PROJECT MANAGEMENT - WORKS PERFORMED
 - PROJECT CONTROL
6. FINAL CONSIDERATIONS
7. PHOTO REPORT



Initial considerations - Introduction

The present status report is an update on the works for Allegria Apartments. This report covers the date from May to June 2021 and constitute a formal information document for Investors. A photo report of the main performed works is attached to this document.



ALLEGRIA APARTMENTS

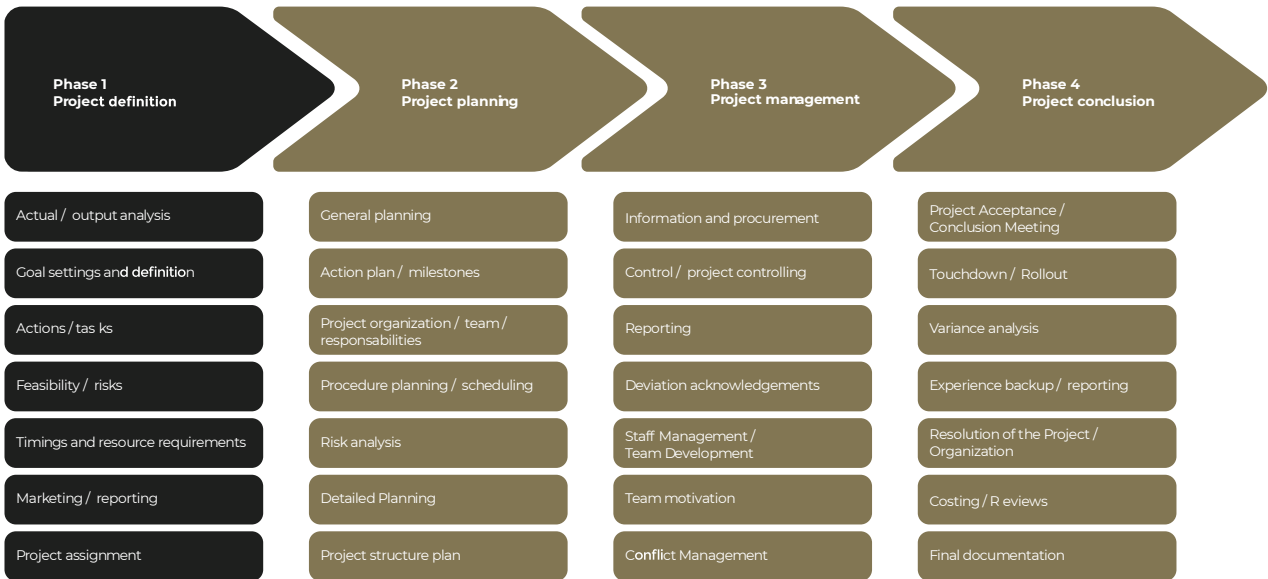
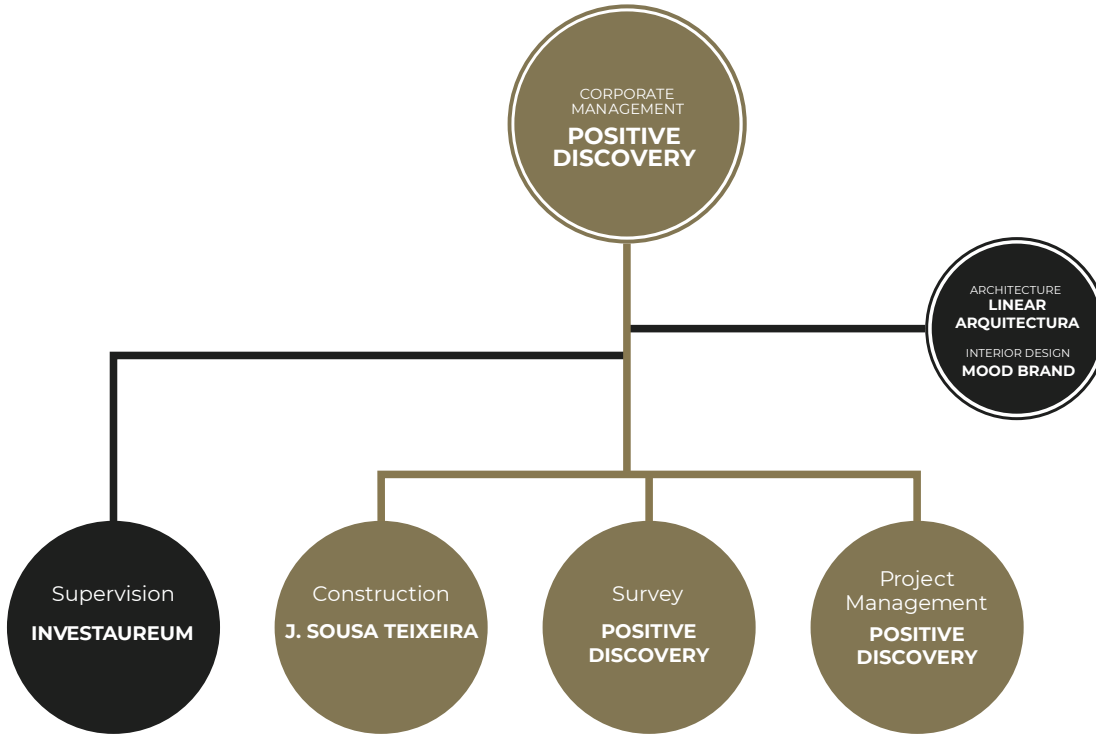
Facing the big lodges of port wine to which it gave its name across the river Douro, Porto is Portugal´s second largest city and there is a certain feeling of rivalry towards Lisbon. But although its ancient root have been preserved with pride, a modern and lively commerce makes it a thriving city and its traditional importance as an industrial center does not diminish the charm and character of its old quarters or even of the newer and busy avenues, shopping centers and quiet residential blocks.

The Cathedral area deserves to be explored, with its various monuments, such as the Renaissance church of Santa Clara, and the densely populated quarter of Barredo, which appears not to have changed since medieval times.

The riverside quarter of Ribeira is also delightful, with narrow streets, typical houses and picturesque life-style: it has been recently restored and now includes fashionable restaurants and bars. Equally lively and colourful is the market of Bolhão, where you can buy almost anything, but more elegant shops can be seen nearby, especially the jewelleries and leather goods shops in the Baixa (down-town).

Porto affords many other attractions, monuments and museums, as well as a cultural agenda which has been steadily improving. With a well-known gastronomy and hospitable population, it is also the starting point to explore the river Douro in an unforgettable journey upstream.

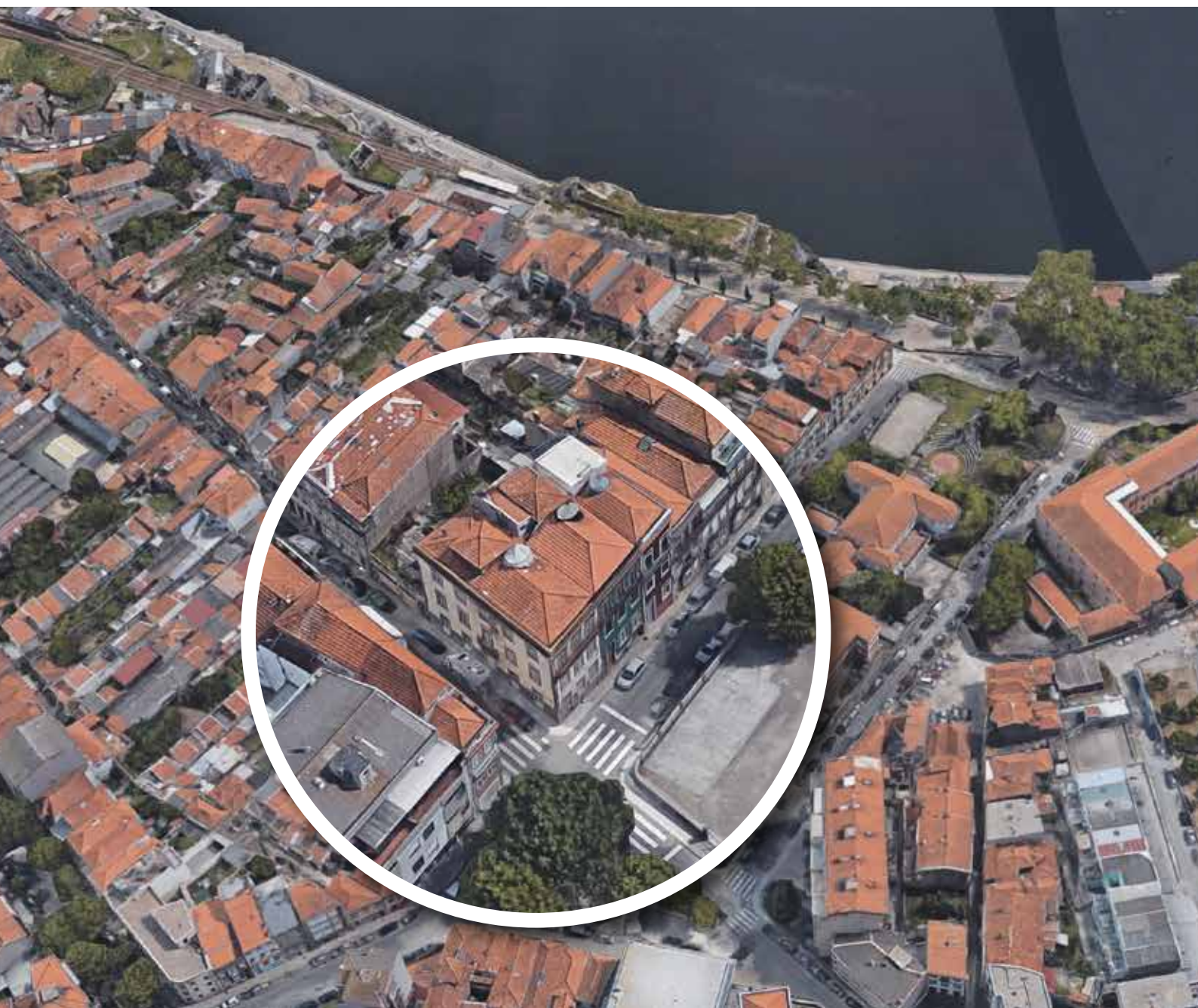
Initial considerations - Project Organization



Project Management

Relevant facts occurred in the period

- Concrete walls are complete
- Mezzanine steel structures are complete
- Roof insulation is almost complete



Project Management

Work Progression

Construction works kept a regular rhythm during this period.

Conclusions

All works are running on schedule

Progress of works

This report only refers to the progress of the jobs executed.

Quality control

During this period, due to the nature of the work performed, the verifications were conducted on concrete, steel and MEP quality and certifications.

Safety Surveys and Implementation of the Health and Safety Plan (HSP)

HSP implemented on site

Inspections and tests

Regular inspections on site

Incidents

No accidents occurred during the period

Project Management - Works Performed

Work package

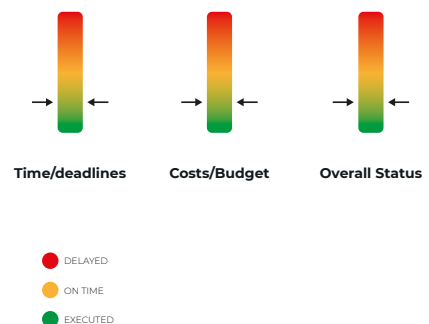
- Demolitions
- Concrete Structure
- Masonry walls
- Walls and ceilings plaster
- Carpentry and Flooring
- Façades
- Prefab Wooden framework
- Bathroom and kitchen
- Wall and ceiling paintings
- Thermal and acoustic insulation
- Electrical installations
- HVAC installations
- Hydraulic/Plumbing installations

COMPLETED
COMPLETED
ONGOING
ON TRACK
ON TRACK
ONGOING
ON TRACK
ON TRACK
ON TRACK
ON TRACK
ONGOING
ON TRACK
ONGOING

Project Control

Project Name - ALLEGRIA APARTMENTS

Date - 30.06.21



Final considerations

All construction works are on track with the estimate time schedule.



Signature Construction Director

Signature Survey Director

Signature Project Manager



PHOTO REPORT

ALLEGRIA APARTMENTS



INVESTAUREUM
A MEMBER OF AUREUM GROUP



Figure 1.
Preparing walls insulation

Figure 2.
Preparing walls insulation



Figure 3.
Preparing walls insulation

Figure 4.
Mezzanine steel structures are completed





Figure 5.
Mezzanine steel structures are completed

Figure 6.
Mezzanine steel structures are completed



Figure 7.
Roof insulation is almost completed

Figure 8.
Roof insulation is almost completed





Figure 9.
Terraces are ongoing

Figure 10.
Roof insulation is almost completed



Figure 11.
Roof insulation is almost completed

Figure 12.
Framework on façades are ongoing





INVESTAUREUM

A MEMBER OF AUREUM GROUP

Porto | Lisbon | Beirut | Dhaka | Dublin | Ho Chi Minh | Istanbul | Montreal | Macau